

CERTIFIED LAND CORNER RECORDATION

DESCRIPTION OF CORNER EVIDENCE FOUND, AND ORIGINAL RECORD (If known)

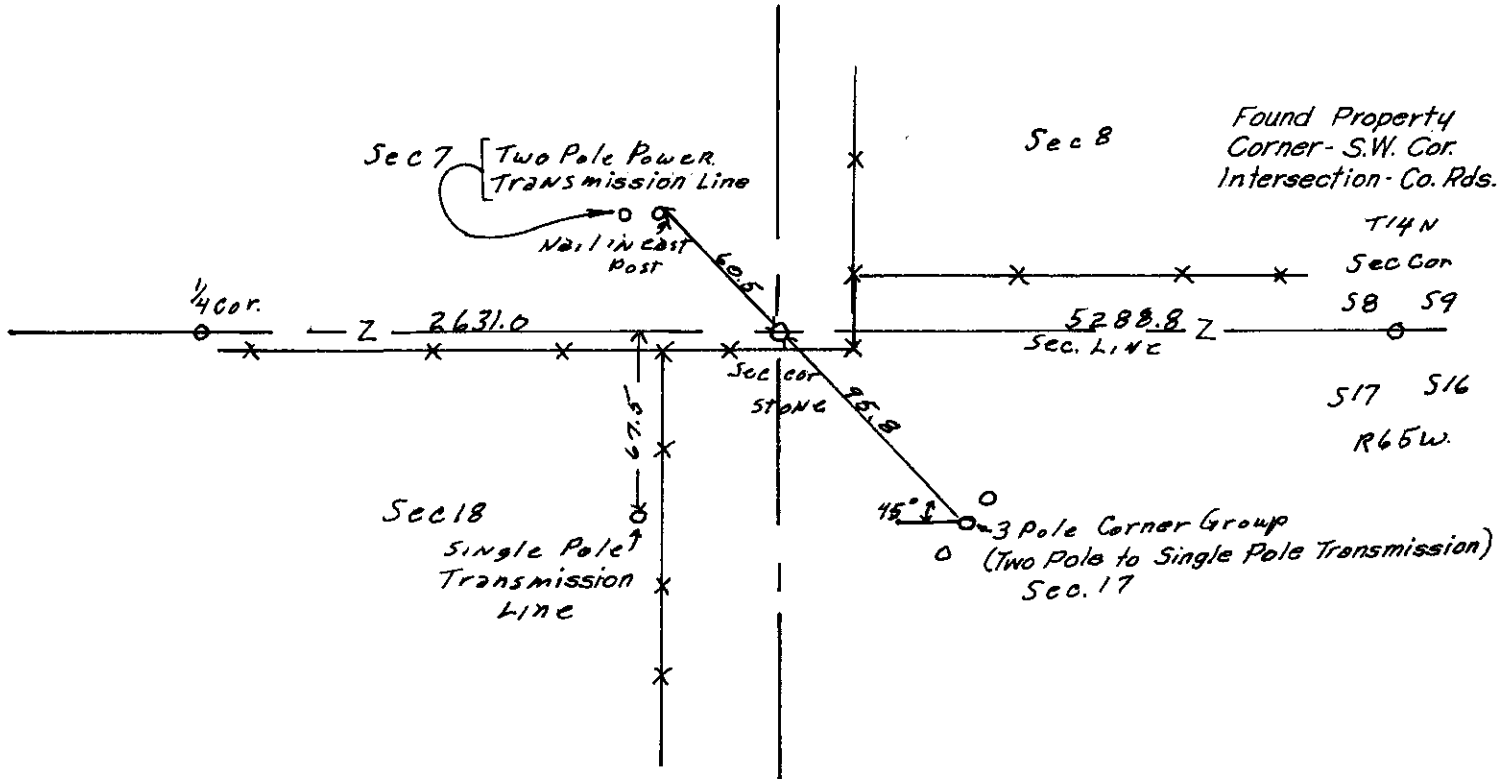
LOCATION
 S. 7 S. 8
 S. 18 S. 17
 T. 14 N., R. 65 W.,
 6th P. M.

Found stone marked with X on top. Buried 12" deep.

DESCRIPTION OF MONUMENT AND ACCESSORIES ESTABLISHED TO PERPETUATE THE ORIGINAL LOCATION OF THIS CORNER:

Accessories are poles of power transmitting lines as shown. Not remonumented.

SKETCH, WITH COURSE AND DISTANCE TO ADJACENT CORNER IF DETERMINED IN THIS SURVEY.
 (May Sketch or Paste Reproduction on Reverse Side.)



I, ROBERT H. WHITNEY certify that I have carefully performed or reviewed the work done on the diagrammed corner as reported on this recordation form and approve the same.

Robert H. Whitney P.E. 304
 Signature of Surveyor Registration No.

STATE OF WYOMING,
 Office of Clerk and Recorder,
 County of Paramo

This "corner record" was filed for record on the 7 day of November, 1974, was noted on the cross-index plat and is assigned page No. _____, in book No. _____.

John B. Shisman
 County Official

Cross Index No. <u>15</u>	T. <u>14</u>	R. <u>65</u>	<u>6</u> Mer.
_____	T. _____	R. _____	Mer.
_____	T. _____	R. _____	Mer.
_____	T. _____	R. _____	Mer.
_____	T. _____	R. _____	Mer.
_____	T. _____	R. _____	Mer.
_____	T. _____	R. _____	Mer.

Photographed

Indexed B

Posted

Assessor _____

Notar Public _____

This instrument was filed for _____
3 0 8 P.M.

_____ day of December
19____ 74 and duly recorded

book _____ on page _____

John A. Williams

County Clerk & Ex-Officio Registrar of Deeds

By [Signature] Deputy